

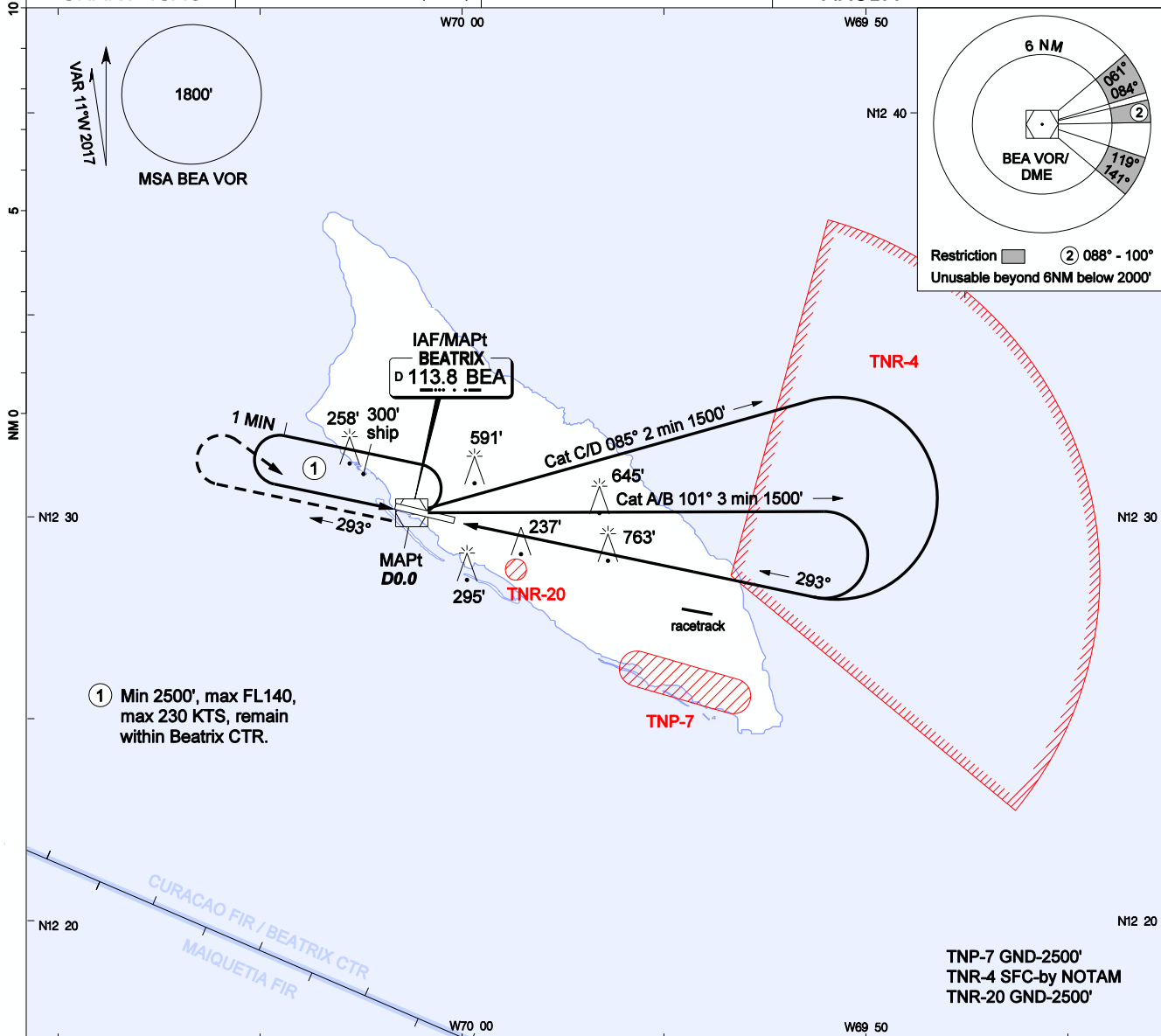
AIP DUTCH CARIBBEAN

**INSTRUMENT
APPROACH
CHART- ICAO**

AD ELEVATION: 62'
TRANS LEVEL: FL 40
TRANS ALT: 2500' (2438')

BEATRIX:
APP/TWR 120.9 GND 118.0
APRON 121.6 ATIS 132.1

**VOR X RWY 29
REINA BEATRIX INT'L (TNCA)
ARUBA**

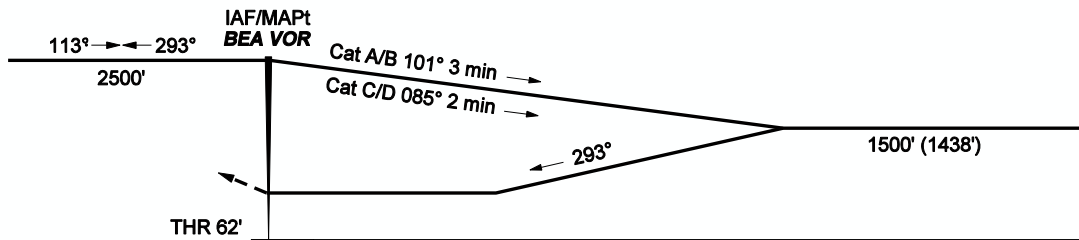


① Min 2500', max FL140, max 230 KTS, remain within Beatrix CTR.

Restriction ② 088° - 100°
Unusable beyond 6NM below 2000'

TNP-7 GND-2500'
TNR-4 SFC-by NOTAM
TNR-20 GND-2500'

MISSED APPR: Climb on BEA R-293 outbound to 1500', then turn right climbing to 2500' in hold, or as directed by ATC.



OCA(H)	A	B	C	D	GROUNDSPEED - DESCENT RATE						
					KNOTS	70	90	100	120	140	160
STRAIGHT-IN	1060' (998')	1060' (998')	1060' (998')	1060' (998')	FT/MIN	372	478	531	637	743	849
CIRCLING	1060' (998')	1060' (998')	1160' (1098')	1160' (1098')							

- TNR-4 is not active during Rwy 29 operations.
- Bearings are magnetic. Altitudes, elevation and heights in feet and distance in NM.
- Heights are relative to AD elevation.

CHANGES: Mag var date.